

Autumn 2 Year 6 – Geographical Map Skills

Maths – Key Learning - Fractions

- Comparing, ordering and simplifying fractions
- Adding and subtracting fractions and mixed numbers
- Multiplying and dividing fractions.
- Working out equivalent fractions and fractions of amounts
- Converting and calculating with metric and imperial measurements, including miles and kilometres

English – Key Learning

Narrative based on the experience of the main character in the story of “Good Night Mr. Tom”

Diary entry focusing on using emotive language

Links

Grammar.lgfl.org.uk

bbc.com/bitesize

Key Grammar Focuses

Compound and complex sentences, Adverbial phrases, relative clauses, embedded clauses, different tenses of verbs.

Reading – Key Texts

Goodnight Mr Tom by Michelle Magorian

Key Skills

Vocabulary
Infer
Predict
Explain
Retrieve
Summarise

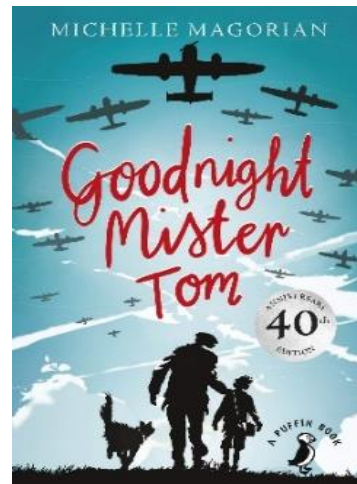
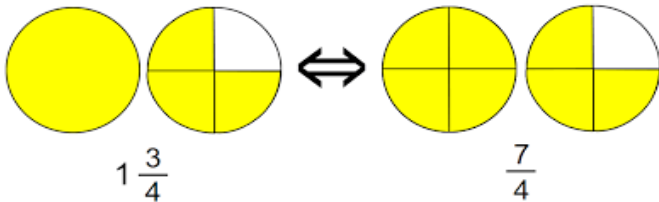


Links

<https://www.literacyshedplus.com/en-us/browse/reading-vipers>

Divide

$$\frac{2}{3} \stackrel{\div 2}{=} \frac{4}{6} \stackrel{\div 2}{=} \frac{8}{12}$$



Helpful Reminders

- Read daily for 5 minutes and complete your reading journal
- Daily spelling tests
- Comprehension activities set daily
- Maths homework set weekly along with TTRockstars and KIRFS

Foundation Subject Learning

Geography – Geographical Map Skills (Italy)

- Using atlases to identify geographic features including physical and human characteristics
- Identify the position and significance of Equator, Northern Hemisphere, Tropic of Cancer, Arctic Circle, Greenwich/Prime Meridian, and time zones (including day and night)

Science – Living Things and their Habitats

- Exploring how organisms are related to each other
- Classifying animals using the Linnaeus classification system

Art and Design – War Art

- How war is represented through art

Computing – Digital Presentation

- Combining resources from different sources into a digital presentation, showing clear sense of intended purpose and 'audience'

RE – Interpretation

- Christianity: In relation to the two birth narratives

PSHE – Friendship

- The value of friendship.
- Recognising challenges that arise from friendships.
- Recognising safe/unsafe behaviours with focus on technology.

Key Vocabulary

- Northern Hemisphere
- Latitude/Longitude
- Arctic Circle
- Physical/Human Features
- Greenwich/Prime Meridian
- Tropics of Cancer and Capricorn

Key places and events

- Italy
- England
- United Kingdom
- Capital cities
- Europe



Fatima
Friendship

Key Concepts

- Geographical similarities and difference through the study of human and physical geography
- Describing key aspects of human geography

Trips and Experiences

- A walk around our local area
- Imperial War Museum

Values

- Friendship
- British Value: Respect and Tolerance



I can use an atlas to identify physical and human features of a place.

I can compare and discuss physical features of places within Europe.

I can describe the changes that have occurred within my city over the past years.

I can compare the climate and biome of Italy to ours.